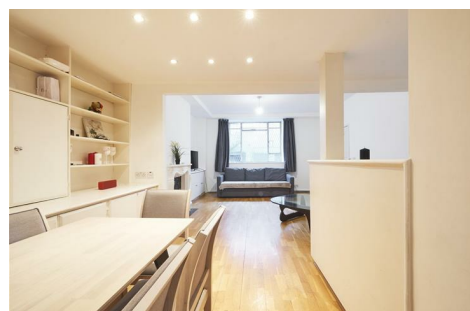


## Gloucester Terrace, W2 3DA

£2,900 PCM



A bright and spacious two-bedroom apartment set on the lower ground floor of a beautiful period conversion, benefiting from its own private entrance.

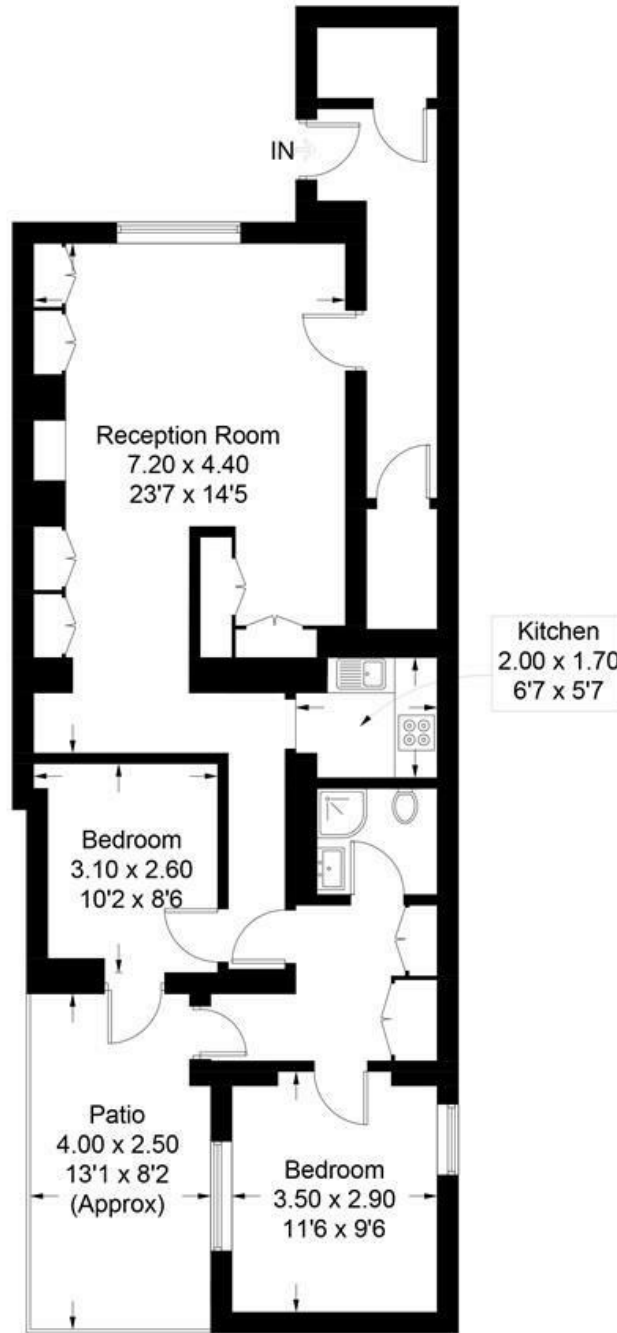
The property comprises a light-filled reception room, a modern compact fitted kitchen, and two bedrooms, both with direct access to a private decked patio area. Ample storage space throughout.

Ideally located just a 4-minute walk from Lancaster Gate Station and the open green spaces of Hyde Park, with Paddington Station also within easy reach, offering excellent transport links.

Available to move in soon.

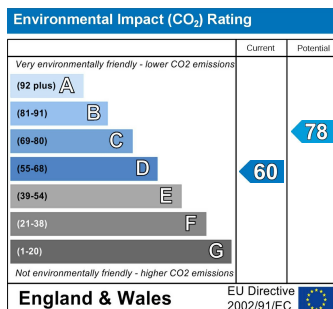
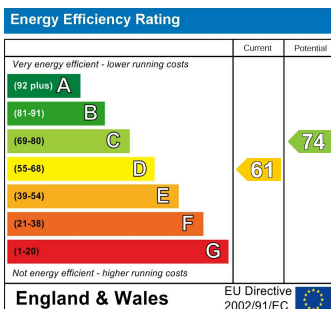
# Gloucester Terrace, W2

Approximate Gross Internal Area = 77.8 sq m / 837 sq ft



## Lower Ground Floor

Illustration for identification purposes only, measurements are approximate, not to scale. floorplansUsketch.com © (ID522925)



## TENURE

**Leasehold: 140 years remaining**  
**SC & GR: £2052 p.a. approx**